



# STEALTH CUSHIONS

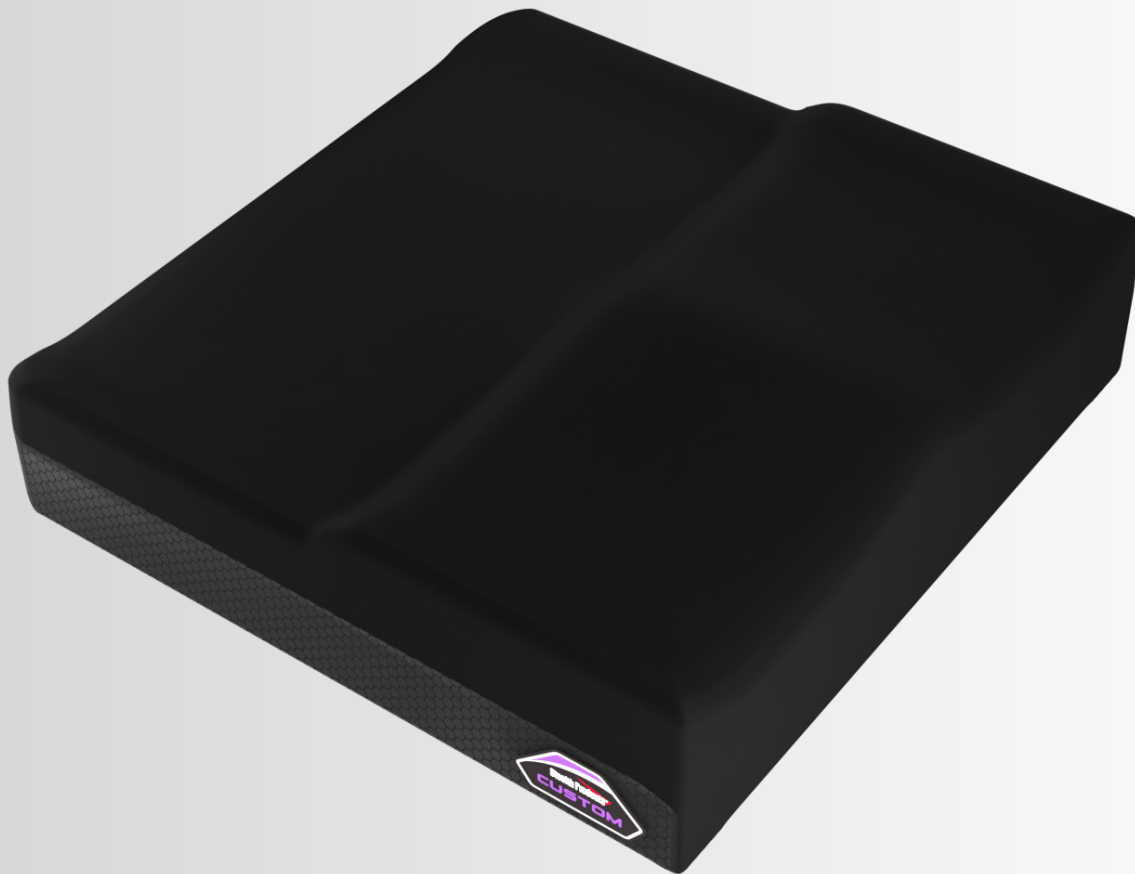
POWERED BY  COOLCORE

# STEALTH CUSHIONS

POWERED BY 

## E2609

Custom fabricated wheelchair seat cushion, any size \*



### Customer Satisfaction

Stealth Products strives for 100% customer satisfaction. Your complete satisfaction is important. Please contact us with feedback or suggested changes that will help improve the quality and usability of our products. You may reach us at:



Stealth Products, LLC  
104 John Kelly Drive, Building A, Burnet, Texas 78611

Phone: (512) 715-9995 Tdl Free: 1(800) 965-9229  
Fax: (512) 715-9954 Tdl Free: 1(800) 806-1225

info@stealthproducts.com www.stealthproducts.com



MDSS GmbH  
Schiffgraben 41  
30175 Hannover, Germany



### FOR CONSIDERATION

Configurations might change without notice. Custom Seat Cushion pictures are based on prototypes.



\*ONLY APPLICABLE IN THE UNITED STATES OF AMERICA

HCPCS codes provided should not be considered as legal advice and do not guarantee reimbursement.

DME providers are responsible for determining appropriate billing codes when submitting for insurance reimbursement.



# INDEX

## Custom Cushion 4

Fast Lead Time Sizes (FLTS) . . . . .	4
Cushion Covers. . . . .	4
Stealth Custom Seat Cushion. . . . .	4

## Cushion Foam 5

Layered Foam Structure. . . . .	5
Available Foams . . . . .	5

## Cushion Format 6

Anti-Thrust . . . . .	6
Planar . . . . .	6

## Special Configurations 7

Pressure Relief and Growth Modifications . . . . .	7
Leg Length Discrepancy . . . . .	7
Ischial Relief. . . . .	7

## Mounting 8

Seat Pans / Seat Pan Mounting Hardware. . . . .	8
Aluminum Seat Pan Mounting Hardware . . . . .	9
Rigidizer ACM (ABS Contour Mold). . . . .	9

## Additional Options 10

Special Storage & More . . . . .	10
Other Accessories . . . . .	10

## In-Depth Reference 11

Extended Informations & Set Up Recommendations . . .	11
--	----

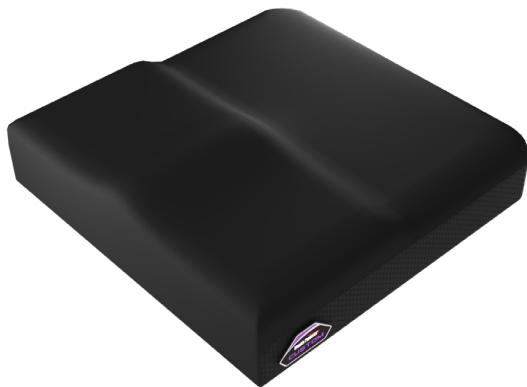
## Stealth Cushions 12

Complete After Market Cushion Line . . . . .	12
--	----

**1.800.965.9229**

[www.stealthproducts.com](http://www.stealthproducts.com)

# CUSTOM CUSHION



## Stealth Custom Seat Cushion

The redesigned and re-imagined custom seating brings the best of Stealth with more streamlined design, better materials and simplistic ordering process.

We have re-evaluated the complex rehab process to be able to offer this new line of custom seat cushions that we hope will cover all the basics, plus other challenges along the way. The Custom Seat Cushion is an adaptable seat cushion.

## Fast Lead Time Sizes (FLTS)

Full matrix on page 13

		Seat Width							
		10in (25.40cm)	12in (30.48cm)	14in (35.56cm)	16in (40.64cm)	18in (45.72cm)	20in (50.80cm)	22in (55.88cm)	24in (60.96cm)
Seat Depth	10in	●	●						
	12in	●	●	●					
	14in	●	●	●	●				
	16in		●	●	●	●			
	18in			●	●	●	●		
	20in				●	●	●	●	
	22in					●	●	●	●
	24in						●	●	●

## What does FLTS means?

The **fast lead time sizes** refers to the cushion sizes which materials and items to build those dimensions are kept on inventory for fast assembly. All other dimensions outside the above dimensions will require extended lead time.

## Client Specific Sizes

The custom seat cushion allows specific dimensions at **1in (2.40cm)** increments. This customization will be reflected on your quote as **SMDCSHPO** Specified Dimensions Seat Base. Go to page 13 for full matrix reference.

## Cushion Covers

The cushion covers consist mostly of three materials. The contact (top side), non-contact (sides) and anti-slip (bottom side). The non-contact materials (sides and bottom) are always the same, but for the contact material we offer three variations: Coolcore®, Stealth-Tek and Air Mesh.

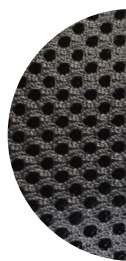


Coolcore is a research proven performance fabric technology that adapts to its environment and regulates temperature by managing heat and moisture. The proprietary construction helps manage and distribute moisture quickly throughout the fabric to enhance the evaporation and drying time.



### Stealth-Tek

Stealth-Tek is a cast coated fabric, which is nylon/polyester fabric coated with polyurethane through the cast coating method. These type of fabrics are waterproof with stretch capability and applications in medical and healthcare. Stealth-Tek is Fluid Proof PU Film laminated to 100% polyester knit T-jersey. It is used in a variety of applications. Waterproof, Breathable and Washable.



### Air Mesh

Air Flow Mesh, better known as Air Mesh, is equipped with fine pores for superior air circulation, it can assist with positioning if the client has sliding issues with the current cushion cover material. This fabric is ideal for those in hot or humid environments.



## Need additional protection for the cushion?

The Polyurethane Liner provides four (4) way stretch, waterproof barrier between the cushion cover and the cushion foam and comes with a waterproof zipper.



Waterproof Zipper



# CUSHION FOAM

## Layered Foam Structure

### Upper Layer

The upper layer is reserved or mostly used with soft material since is the layer in direct contact with the client. At a range of 1/2in (1.27cm) thickness, the upper layer wraps towards the front of the cushion to maintain a constant comfort for the client.

### Middle Layer

The middle layer can also include softer foams as well as medium resistance foams.

### Lower Layer

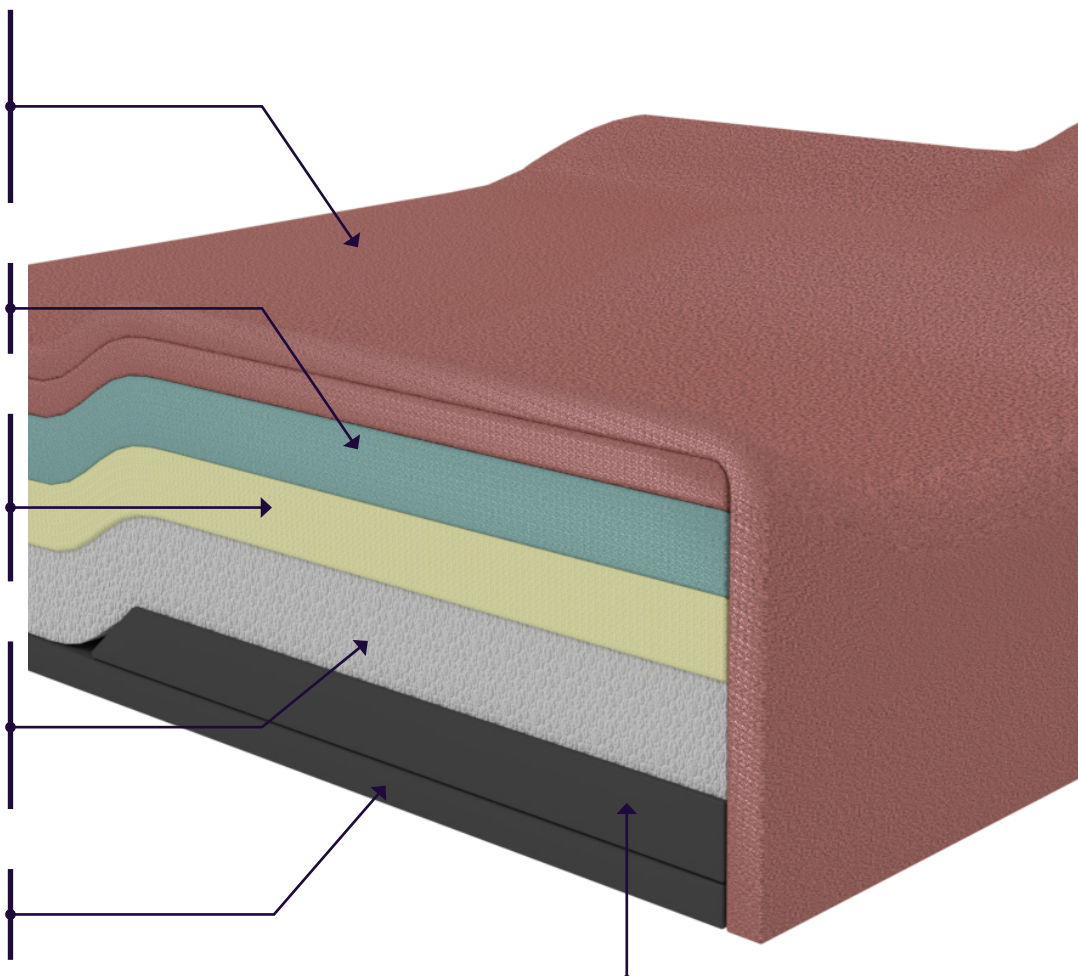
The bottom layer recommended foam materials are medium to firm. This will prevent the client from feeling any contour configuration foam materials which are normally more thick to provide abduction and adduction support.

### Contour Layer

Use to place abductor and adductor structure material consisting of Etha foam. Placed under the main layers to avoid discomfort to the client and above the anti-thrust and base to help maintain contoured shape.

### Base Layer

Required base 5/8in foam, consisting of a closed cell firm foam for rigidity and easy handling.



### Anti-Thrust Layer

The anti-thrust provides a boundary to minimize forward migration of the ITs into a posterior pelvic tilt. Consisting of a closed cell foam, the anti-thrust is a pre-ischial support surface intended to inhibit forward migration of the ischial tuberosities.

Often used when extensor tone is present. The initial placement is half the depth of the cushion to allow for 1in (2.54cm) to 1 1/2in (3.81cm) from ITs to the front edge of anti-thrust.

## Available Foams

### SunMate® FRG



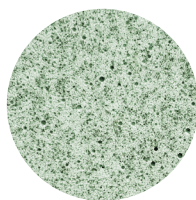
Extra Extra Soft



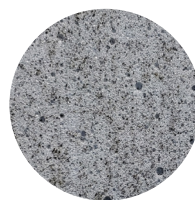
Extra Soft



Soft



Medium Soft



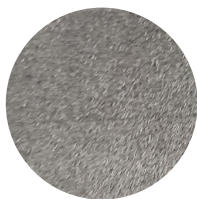
Medium

SunMate® FRG cushions provide the same high impact energy absorption and soft pressure properties as regular SunMate®, but with an added element of safety. SunMate® FRG contains a non-halogenated fire retardant that allows the cushion to pass more stringent fire tests. FRG also provides medical or government facilities, required to purchase equipment that meets strict fire codes, with a safe, high-quality cushion option.<sup>[1]</sup>



#### Open Cell

Open cell polyurethane foam is a soft foam. Open cell refers to the cell walls, or surfaces of the bubbles, which are broken so that air fills all of the spaces in the material.



#### Closed Cell

Closed cell foam is a rigid material that provides the kind of stability required for the base of many of our pads and cushions.

Closed Cell it is mostly used for base and other structural functionality, not for use on top layers.



The **FRG** is a patented all-natural fire retardant material (no additives) made of 33% to 36% plant-based ingredients.

Tested to support up to  
**350 LB**

1. Dynamic Systems Inc. <https://www.sunmatecushions.com/blogs/specialty-cushion-articles/85587588-sunmate-frg-now-available-for-online-ordering>

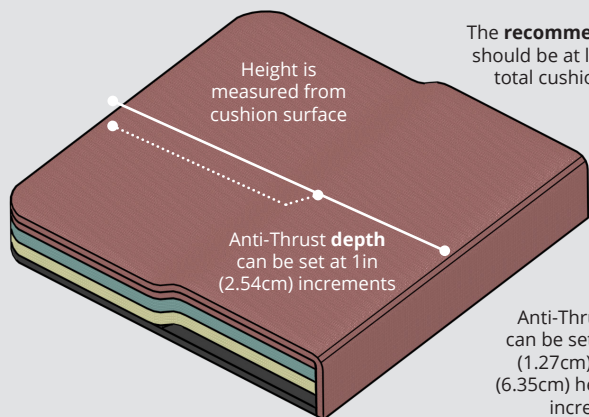


# CUSHION FORMAT

## Anti-Thrust

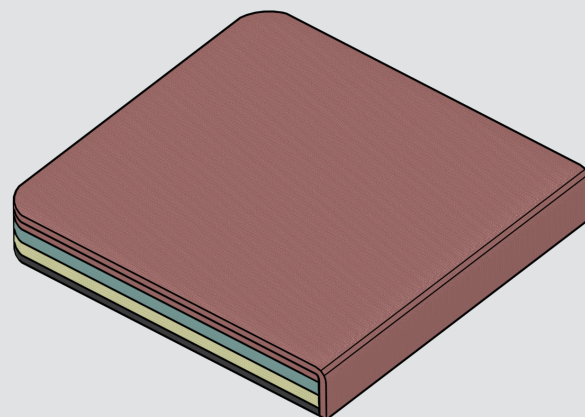
## Planar

FLAT SURFACE

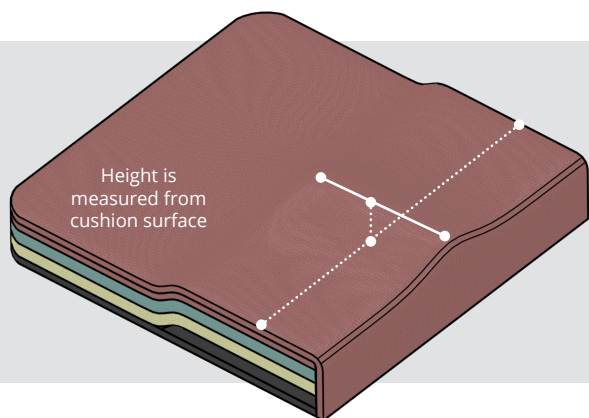


The **recommended** depth should be at least 30% of total cushion depth.

Anti-Thrust **height** can be set from 1/2in (1.27cm) to 2 1/2in (6.35cm) height at 1/2in increments

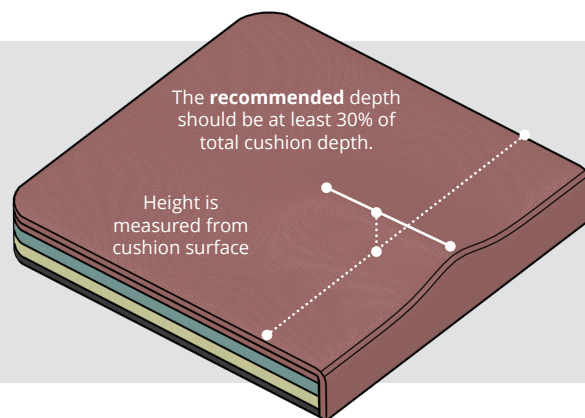


ABDUCTOR

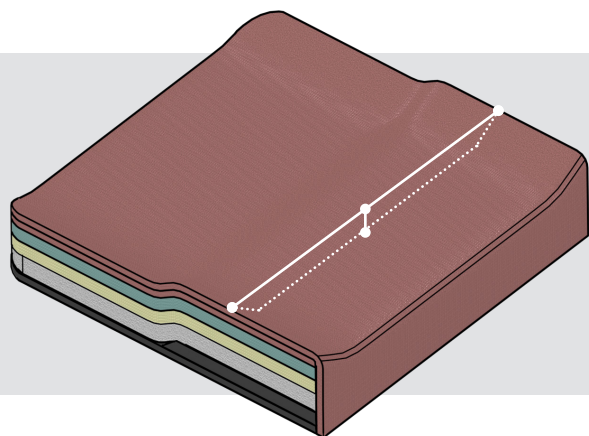


Abductor **depth** can be set at 1in (2.54cm) increments

Abductor **height** can be set from 1in (2.54cm) to 2in (5.08cm) height at 1/2in increments

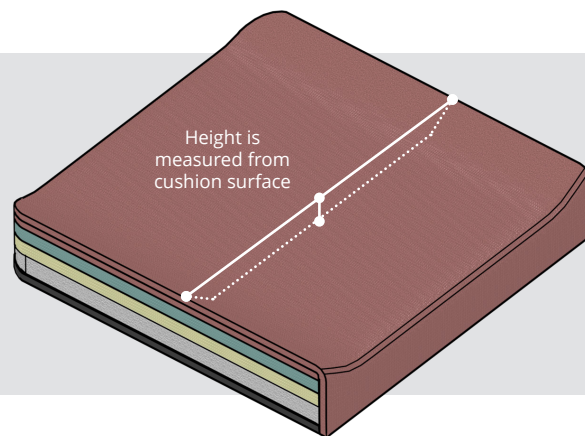


ADDUCTOR

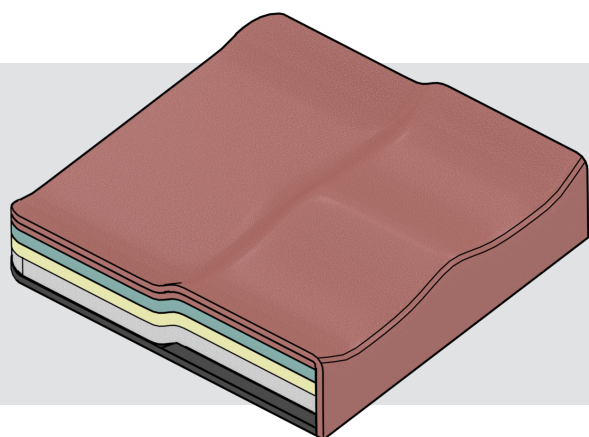


Adductor **depth** same as seat cushion total depth

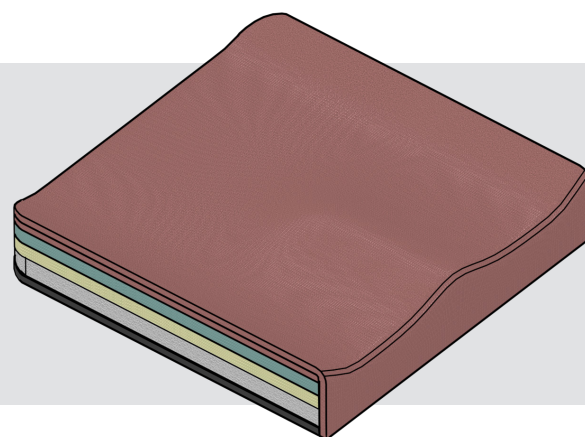
Adductor **height** can be set from 1/2in (1.27cm) to 2 1/2in (6.35cm) height at 1/2in increments



FULL CONTOUR



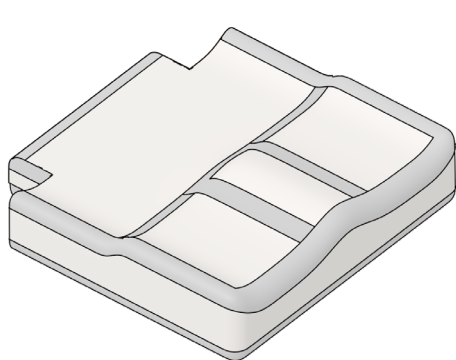
**Full Contour** is the combination of abductor and adductor applied to the cushion format. To order you need to provide abductor and adductor dimensions following the same parameters as stipulated above.





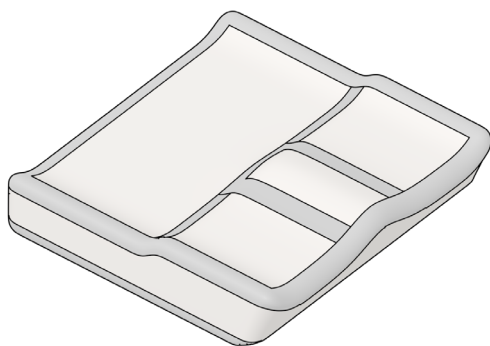
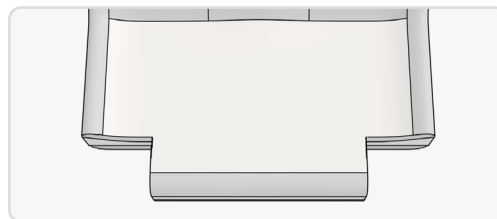
# SPECIAL CONFIGURATIONS

## Pressure Relief and Growth Modifications



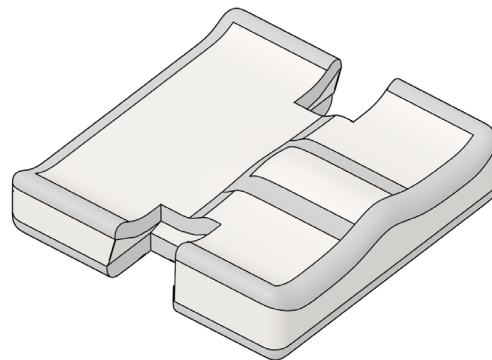
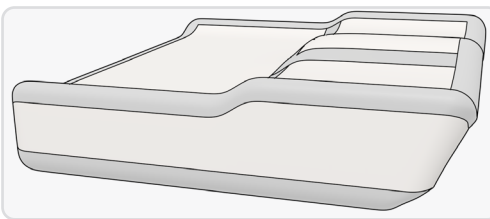
### Growth Notch

Growth notches are cut outs that allow you to adjust client growth back and forth for the seat depth. The width of the notch is 2in (5.08cm) and can be set to three different depths from 1in (2.54cm) to 3in (7.62cm) at 1in (2.54cm) increments.



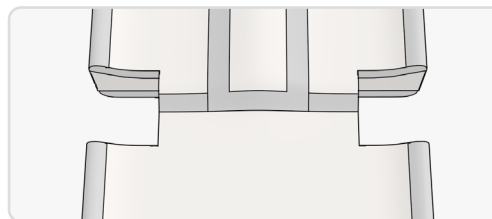
### Hamstring Relief

A hamstring relief is an approximately 45° angle cut to the front of the seat cushion that helps prevent forward migration of the pelvis due to shortened or tight hamstrings. Also aids in prevention of contact with the back of the legs.

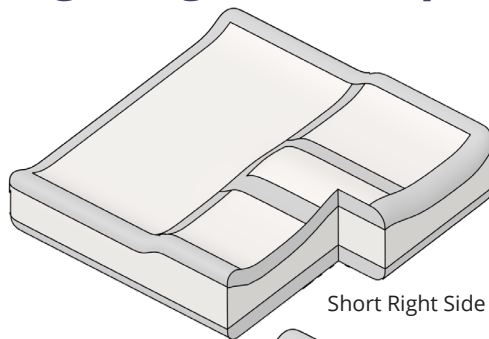


### I-Style Configuration

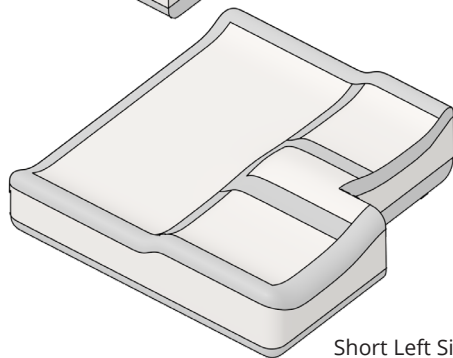
The I-Style allows for growth width adaptability of the lateral pelvic support. The cut-out comes in a predefined dimension of 3in (7.62cm) depth and 2 1/2in (6.35cm) wide per side.



## Leg Length Discrepancy Ischial Relief



Short Right Side



Short Left Side

Leg Length discrepancy allows to adjust the seat depth independently per side. The width is predetermined to be half width of the cushion and can be set from 1/2in (1.27cm) to 2in (5.08cm) at 1/2in (1.27cm) increments. You can also use this cut-out to accommodate a residual limb support hardware.

### Gel Inserts:

#### a) Viscous Gel

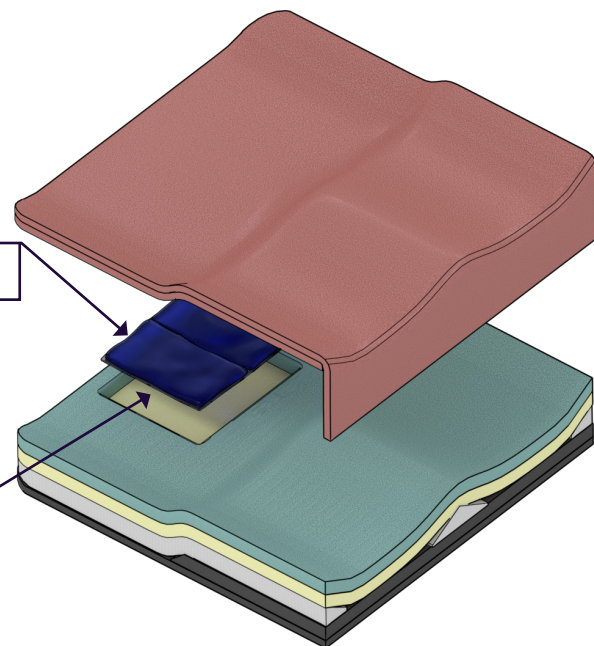
Good for clients who have poor trunk control and need better immersion to stabilize the pelvis.

#### b) Ultra-Lite

Good for clients who need more movement and less shear. Pediatric clients for example.

#### Basic Cut-Out Dimensions<sup>1)</sup>:

Depth: 8in (20.32cm)  
Width: 12in (30.48cm)  
Height: 1in (2.54cm)

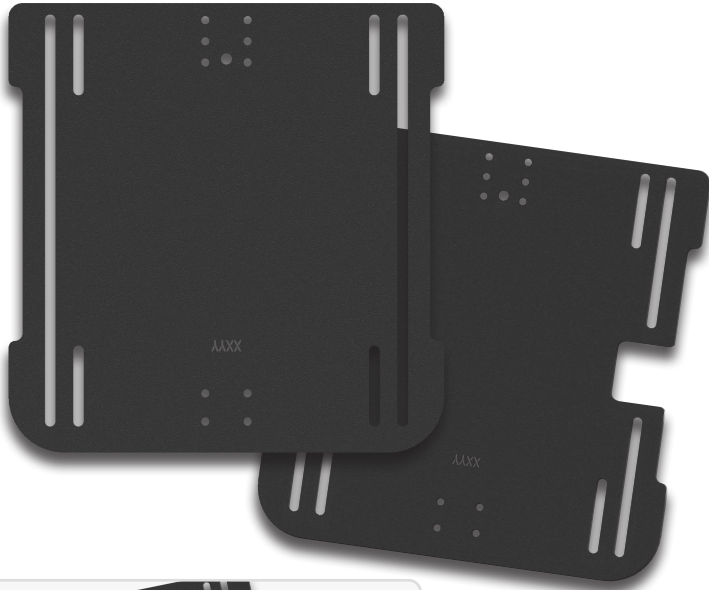


The ischial relief helps to prevent or address coccyx pain by using gel inserts to distribute the pressure in a more organic approach. There are two gel options to choose from which address different types of clients, **a) Viscous Gel** and **b) Ultra-Lite**.

1. For most dimensions

# MOUNTING

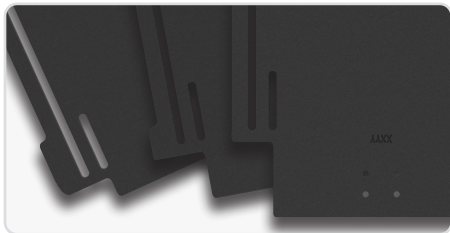
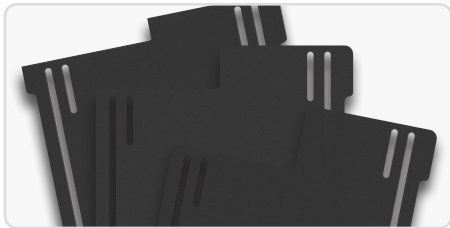
## Seat Pans / Seat Pan Mounting Hardware



The aluminum seat pan has been tested to match custom cushion weight maximum support of 350lb. The seat pan is black anodized powder coated.

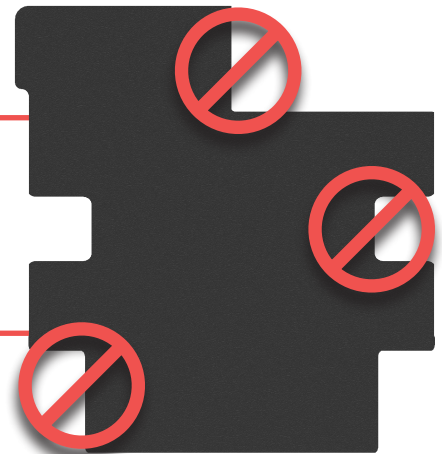
Also this seat pan will match cushion dimensions except if any special configurations is requested such as the Hamstring Relief, in this case the seat pan could be either 1in (2.54cm) or 2in (5.08cm) shorter than the seat total depth.

Depending on cushion dimensions there could be limitations of how many configurations can be combined, taking into consideration hardware placement requirements and weight capacity.

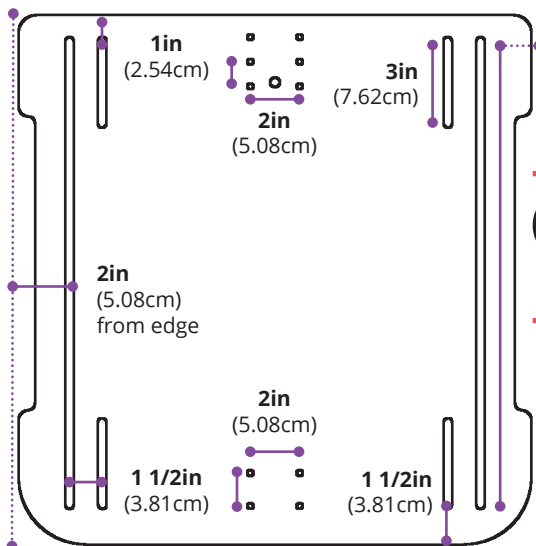


**Too many special configuration combination can seriously compromise the seat pan weight capacity and integrity.**

The example on the right illustrate this on a 12in (30.48cm) x 12in (30.48cm) set up. When brainstorming the cushion, prioritize function and weight compromises.



### General Dimensions

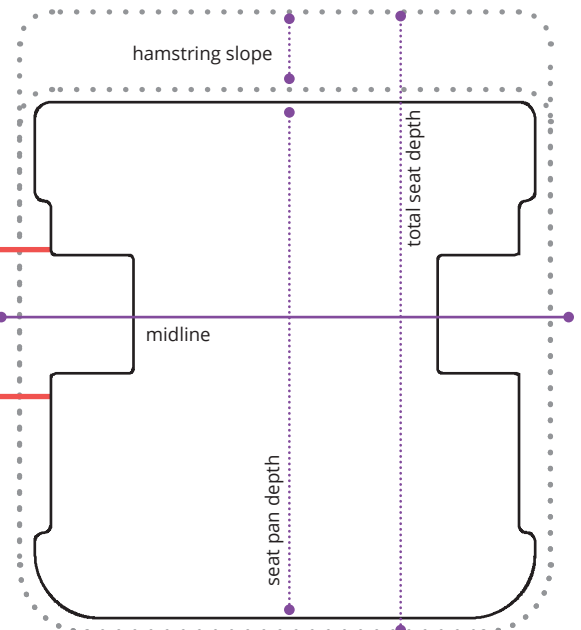


Subtract  
**2 1/2in (6.35cm)**  
from total depth



**When combining Hamstring Relief and the I-Style cut-out, midline refers to total depth midline, not seat pan midline**

**Want other options?**  
See page 14



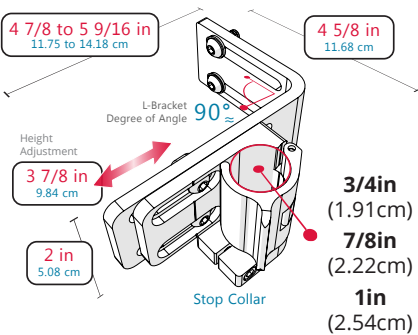


# Aluminum Seat Pan Mounting Hardware

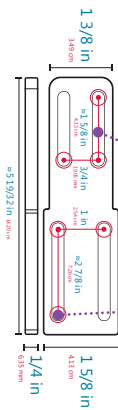


## Trouble Free (TF) Hardware

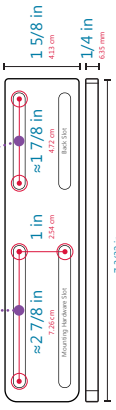
TF Mount is affordable and strong. Easy snap-on mounting made of black, anodized aluminum and resistant black plastic allows for a better snap and flexibility without damaging the chair's frame. This makes it easy to share the seating system among mobility bases while maintaining the proper support necessary the entire time.



## Pediatric



## Adult



## J-Hook and L-Brackets (J&L) Hardware

This hardware is designed to be effective, lightweight and affordable. J&L hardware is produced from durable, anodized aluminum or high grade steel.

### Fits on frame tubing of

3/4in (1.91cm) 7/8in (2.22cm) 1in (2.54cm)



## All Purpose (Knob) Hardware

Better known as the All Purpose Hardware, it is a strong and reliable hardware that fits to most frame tubing sizes on the market. Available on pediatric sizes as well.

Available to order in 4 or 2 point options



The custom seat cushion with seat pan is designed to be paired with our True Forming Back (TFB) for a full custom seating option. Since the TFB with 2 point hardware includes a *Seat-to-Back* bracket, this is not included when you select 2 point mounting option. If planning to use the cushion with other system other than Stealth offerings, you need to add it to your quote. The seat cushion will come with seat tabs

# Rigidizer ACM (ABS Contour Mold)



The Custom Seat Cushion will utilize the same rigidizer as the Stealth Cushion.

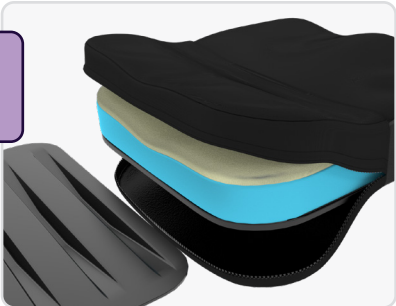
Takes up "hammocking" in the sling to provide a stable flat surface for the cushion.

Comes in 3 widths and it is rated for 350lb weight capacity.

		ACM Width		
		16 (40.64cm)	18 (45.72cm)	20 (50.80cm)
ACM Depth	16	●	●	●
	18	●	●	●
	20	●	●	●

● When Cut  
● Full Depth

The ACM is normally inserted inside the cushions cover.



Got questions? Need more options?  
**1.800.965.9229**  
**1.512.715.9995**  
We got it!

# ADDITIONAL OPTIONS

## Special Storage & More

### Cover Modifications



#### Zipper Pouch SMDZPCOVMOD

The Custom Seat Cushion is available with an optional zippered pouch.

This option adds a small pouch to the front of the cushion.

Dimensions:

8in (20.32cm) Wide

5in (12.70cm) Height

### Other Accessories

Stealth has large variety of options for a personalized system, here are some options your might like.



#### Push & Transfer Gloves

Push & Transfer Gloves have an open finger, half thumb, wrap-around design for easy on and off. Made of leather with padded palms and wrists, the gloves save wear and tear on users' hands throughout a long day of active chair use.



#### Transfer Boards

Sliding boards are used to promote independence and safety during transfers. For those with impaired balance and upper body strength, we highly recommend Stealth's ADI Anti-Slip Transfer Boards as a transfer-assist tool.



#### ADI Carbon Fiber Seat Base

The ADI Carbon Fiber seatbase is a viable option for anybody looking to reduce the overall weight of their manual chair setup while still maintain consistent, solid seating.

Lighweight solution for users under 200lbs.



#### mo-Vis Hand Warmer

The mo-Vis hand warmer improves the flexibility of cold body parts. The hand warmers main functionality is to keep the area around a wheelchairs input device warm. This increases the comfort of the user and their ability to control the input device.



#### True Forming Back

The True Forming Back is designed for comfort, custom fit, and trouble-free adjustability. Our easily accessible hardware is available in both two and four point mounting options and is neatly hidden behind a Velcro flap to maintain a sleek and clean appearance.



#### Tarta® Bag

Tarta Bag offers the following benefits:

1. The weight and the bulkheads are positioned under the chair of the wheelchair to stabilize the center of gravity of the vehicle and avoid possible overturning.
2. The position of the Bag allows the user to have all of his possessions at hand and safe.



# IN-DEPTH REFERENCE

## Extended Informations & Set Up Recommendations

### Custom Seat Cushion Full Dimensions Matrix (Suggested Combinations)

		Seat Width														
		10 (25.40)	11 (27.94)	12 (30.48)	13 (33.02)	14 (35.56)	15 (38.10)	16 (40.64)	17 (43.18)	18 (45.72)	19 (48.26)	20 (50.80)	21 (53.34)	22 (55.88)	23 (58.42)	24 (60.69)
Seat Depth	10	●	●	●	●											
	11	●	●	●	●	●										
	12	●	●	●	●	●	●									
	13	●	●	●	●	●	●	●								
	14	●	●	●	●	●	●	●	●							
	15		●	●	●	●	●	●	●	●						
	16			●	●	●	●	●	●	●	●					
	17				●	●	●	●	●	●	●	●				
	18					●	●	●	●	●	●	●	●			
	19						●	●	●	●	●	●	●	●		
	20							●	●	●	●	●	●	●	●	
	21								●	●	●	●	●	●	●	●
	22									●	●	●	●	●	●	●
	23										●	●	●	●	●	●
	24											●	●	●	●	●

Sizes are by inches (centimeters)

The dimension combinations shown above are suggestions, if you need a different combination, take in consideration material geometrical limitations and return time. Any combination that

does not seems to be accurate will be questioned before manufacturing it. Because of health regulations, cushions cannot be returned. Make sure to include in your order valid contact information

where we can contact you directly for discrepancies we might find on our configurations. For more information call us at 1 (800) 965-9229 or 1 (512) 715-9995.

Got questions? Need more options?

**1.800.965.9229**  
**1.512.715.9995**

We got it!

Great Together



+



powered by



for more information visit [www.StealthProducts.com](http://www.StealthProducts.com)

Custom Seating  
*Reimagined*



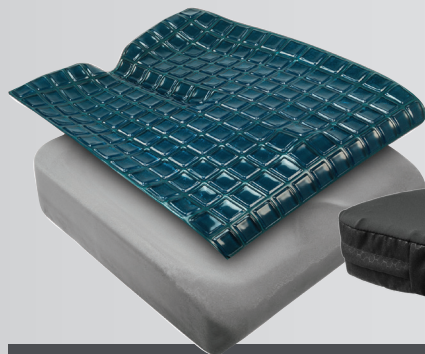
**Stealth Products**  
Solutions For Life

# STEALTH CUSHIONS

Complete After Market Cushion Line



**SIMPLICITY G**



**GLACIAL SP**

**ZEN SP**

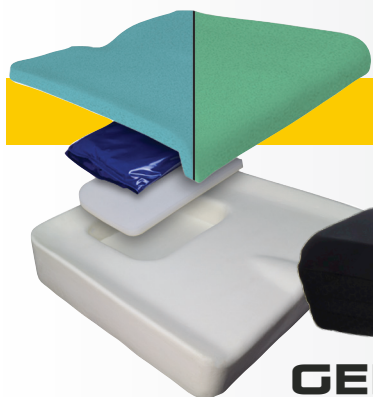


**PREMIERE P**





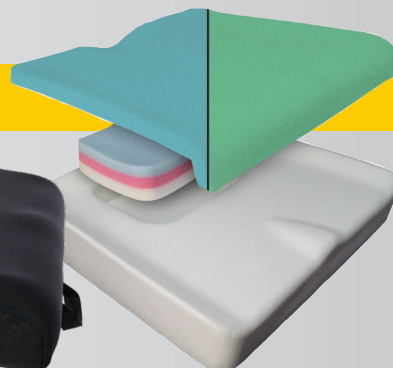
## SPECTRUM SPP



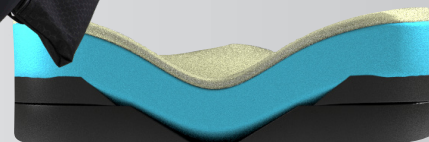
**GEL**



**FOAM**



## SOLUTION SPP



## ESSENCE SPP

## TRU-COMFORT 2 SPP



Got questions? Need more options?

**1.800.965.9229**  
**1.512.715.9995**

We got it!

**CUSHIONS.STEALTHPRODUCTS.COM**

[www.stealthproducts.com](http://www.stealthproducts.com)



Stealth Products, LLC  
104 John Kelly Drive, Suite A  
Burnet, TX 78611

+1 (800) 965-9229  
+1(512) 715-9995

[information@sw.stealthproducts.com](mailto:information@sw.stealthproducts.com)  
<https://stealthproducts.com>  
<https://cushions.stealthproducts.com>



<https://cushions.stealthproducts.com>