



EPIC seating



EFFORTLESS

POSTURAL

CONTROL

Postural variation is a necessity for functional seating. Currently there is no system on the market addressing this need. Epic Seating allows for postural changes throughout the day as required to support function.

Why is this concept so important?

We all move, whether it's at a micro or macro level. We are all moving to accommodate functions such as pressure off-loading, fatigue management, digestion, respiration, or peer interaction.

Epic Seating Features

Anatomical Pivot Point

The pivot point originates from the client as opposed to the frame. The movement occurs above the pelvis not from the seat up.

Tool-less Adjustment

Epic Seating provides tool-less adjustment for care-givers to quickly and easily change the client's position to support function. Back angle and range of movement can be adjusted without the need for tools.

Independent Relief

When in the open, or active setting, the client can freely move through a range of angles to find the postural position that is needed to maximize their functional capability. When the task is completed the system will allow them to return to neutral without caregiver intervention.

Back and **Head Support** sold separately. **Most after-market backs** that can be mounted with a **1in (2.54cm) cane clamp hardware** will fit your new **EPiC Seating**.

Seating setup as shown:

Head Support:
Comfort Plus™

Head Support Hardware:
UniLink™

Back:
ADI® Aluminum Back, also check our TFB™ Backs or ADI Q-Backs

Back Mounting:
Simple Solutions™ FlipLock™

Fits Frame Width: in(cm)

Small 10 to 16 (25.40 to 40.64)

Medium 16 to 21 (40.64 to 53.34)

Large 21 to 26 (53.34 to 66.04)

6in (15.24cm)
posterior pelvic
support height*

* plate height, more options coming soon

1in (2.54cm)
Cane Diameter



Quick Adjustment Lever
adjust posterior thoracic support angle without the need of hardware

Gas Struts
come in two resistance levels

50N ideal for clients with limited active movement or posterior pelvic tilt

100N ideal for clients with normal to highly active movement

Pivot Point
EPiC rotates around an imaginary point to the client's acetabulum or the greater trochanter.

The postural management system consists of:

- Telescopic 1in (2.5cm) back mounting canes: with height adjustable handles. The handle's cane is 7/8in (2.2cm).
- Quick Adjustment Lever: Adjust posterior thoracic support angle without the need of additional tools.
- Gas Struts: Provide resistance to support the client's movement and return to neutral. Available in 50 or 100 Newton resistance levels.
- Pivot Point: Movement is based on a virtual anatomical pivot point, helping to greatly reduce shear and eliminating the need to reposition the client and/or secondary positioning supports.

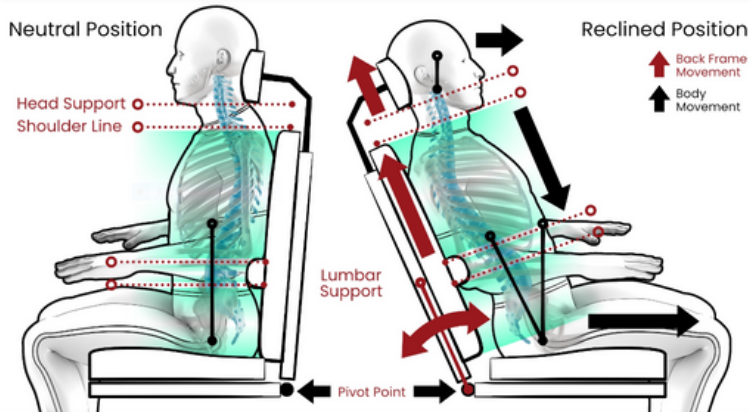
Resistance Levels:

- 50N - Ideal for clients with limited active movement or posterior pelvic tilt.
- 100N - Ideal for clients with normal to highly active movement.

Back Fitting:

- Backrests: Any after-market back is adaptable to EPiC Seating. Back height selection should take into consideration the height of the pelvic support plus an additional 2" to provide proper clearance for movement to occur.
- Back Mounting Hardware: EPiC Seating is compatible with 1" back mounting hardware.

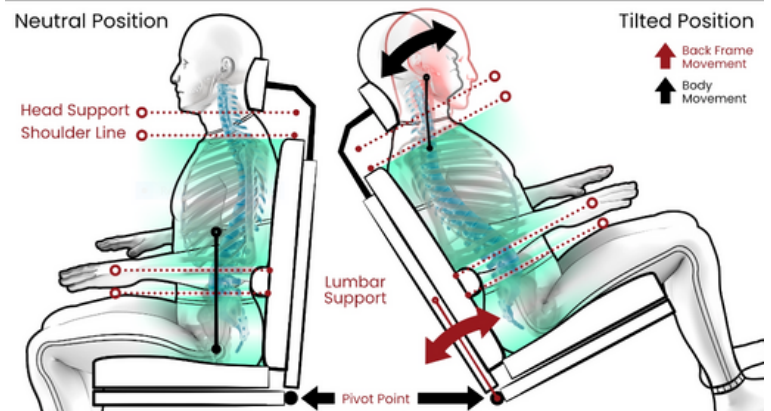
Current Reclining Solutions



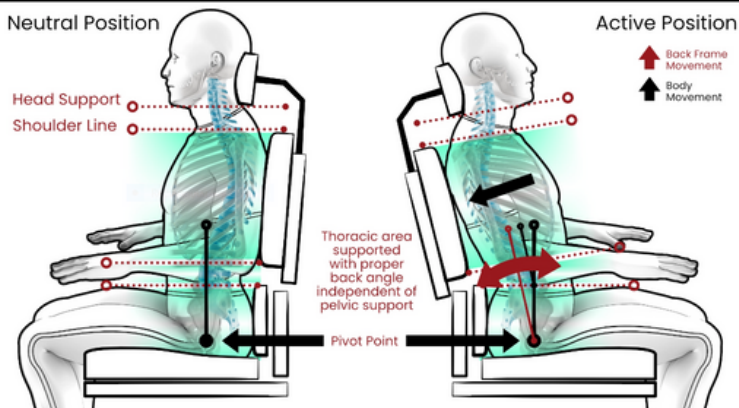
When the back support reclines, the back slides upward relative to the client's body causing friction and shear forces. As the back support returns to neutral position, sliding occurs at the pelvis creating friction and shear forces at the seat surface. Secondary positioning supports such as headrest and laterals also move in conjunction with the back support during recline, which will require mechanical readjustment by a caregiver.

When a system is tilted rearward, the body orientation changes and head positioning will follow. This change can often result in clients looking at the ceiling for extended periods. Many individuals will develop postural accommodations to adjust their line of sight. This behavior introduces trunk and/or neck flexion, which over time can contribute to more complex postural challenges. Lumbar Support: As the client relaxes into the lumbar support, they prompt the pelvic area to slide forward. The non-anatomical pivot point can also contribute to pelvic migration during recline, encouraging the pelvis to rotate backwards and slide forward. The resulting posture may be destructive and will require a caregiver intervention to reposition.

Current Tilt-in-Space Solution



EPiC Seating Solution



The postural management system incorporates an angle/height adjustable stationary pelvic support with a moveable thoracic back support. The system also incorporates an anatomical pivot point which helps to support movement without changes in the postural support devices.

Postural changes help support functions such as respiration, digestion, peer engagement, fatigue management, and performing routine movements, to name a few.

All secondary positioning supports attached to the thoracic segment move in unison with the body, eliminating the need for repositioning events.



For more information, installation videos and current compatible frames, scan this qr code and visit our website.



Stealth Products LLC 32 Wedgwood Rd, Bicester, OX26 4UL

Tel: 01869 324600

Stealthproducts.com